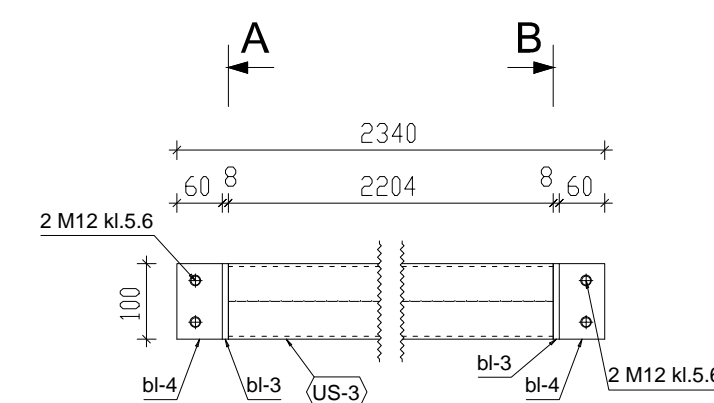
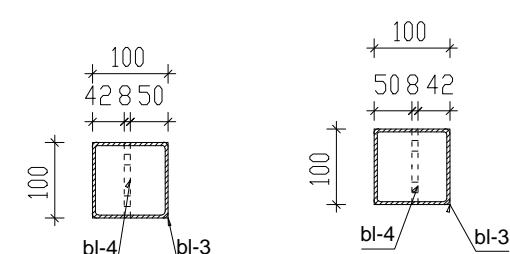


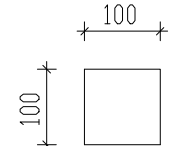
2 x US-3
1:10 St3SX



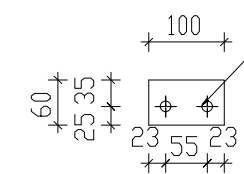
A - A **B - B**



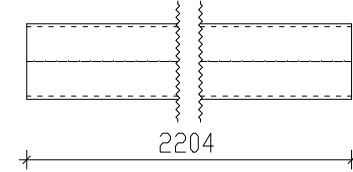
2xbl-3 BL8x100x100 | 1:10



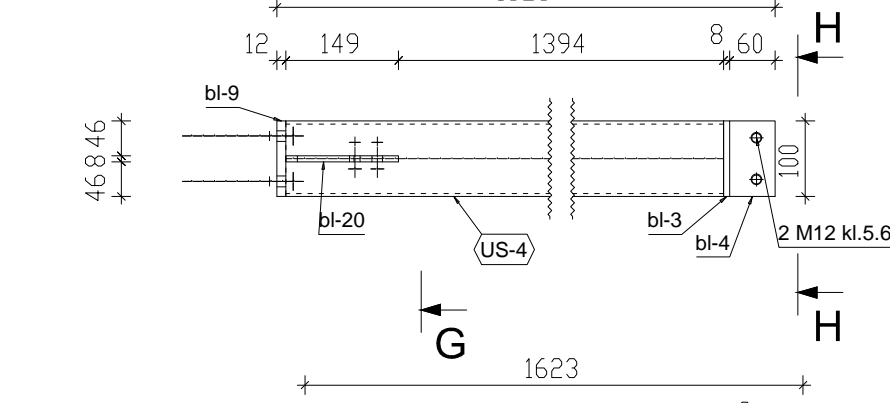
2xbl-4 BL8x100x60 | 1:10



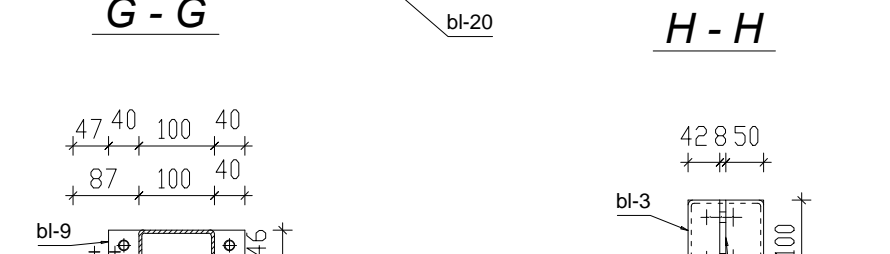
1x us-4 RHS100x4x2204 | 1:10



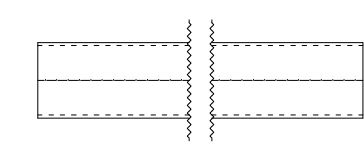
2 x US-4
1:10 St3SX



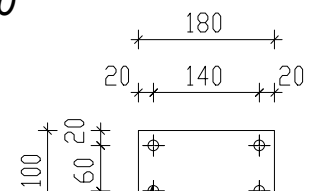
G - G **H - H**



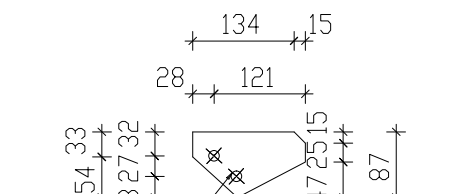
1x us-5 RHS100x4x1543 | 1:10



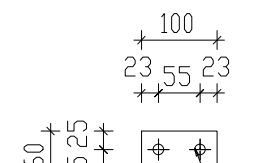
1xbl-9 BL12x180x100 | 1:10



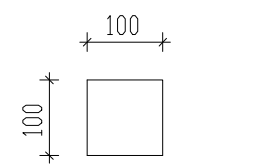
1xbl-20 BL8x149x87 | 1:10



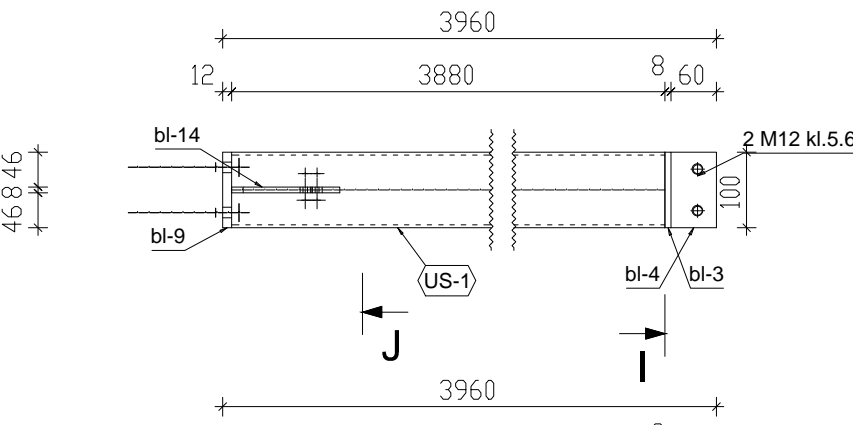
1xbl-4 BL8x100x60 | 1:10



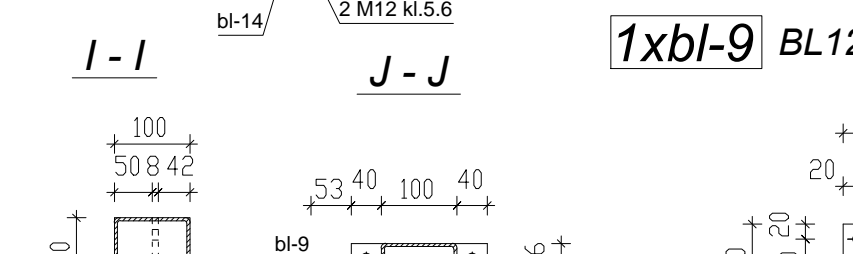
1xbl-3 BL8x100x100 | 1:10



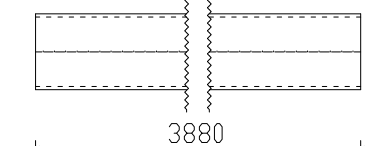
4 x US-1
1:10 St3SX



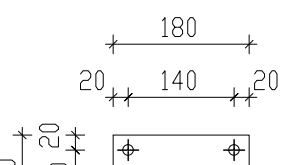
J - J **I - I**



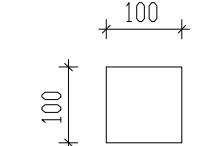
1x us-1 RHS100x4x3880 | 1:10



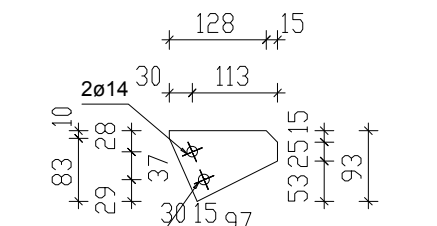
1xbl-9 BL12x180x100 | 1:10



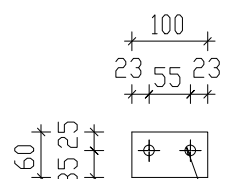
1xbl-3 BL8x100x100 | 1:10



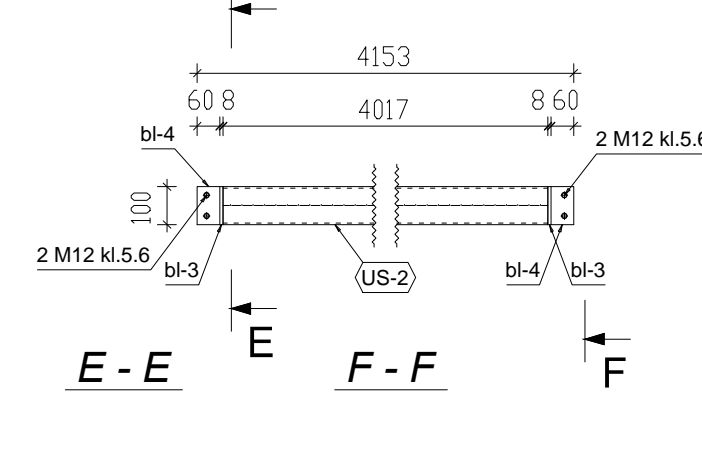
1xbl-14 BL8x143x93 | 1:10



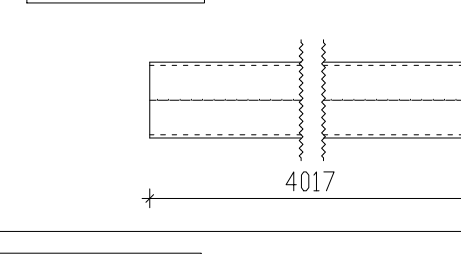
1xbl-4 BL8x100x60 | 1:10



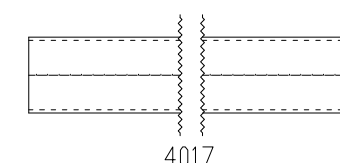
2 x US-2
1:20 St3SX



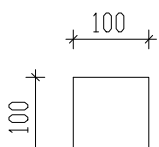
E - E **F - F**



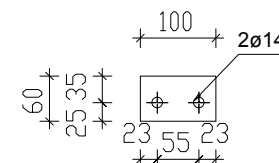
1x us-2 RHS100x4x4017 | 1:10



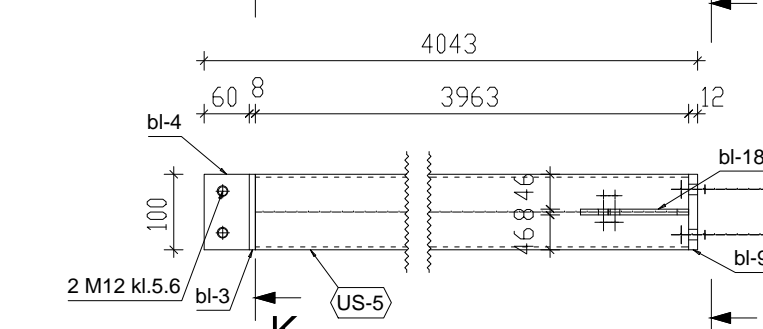
2xbl-3 BL8x100x100 | 1:10



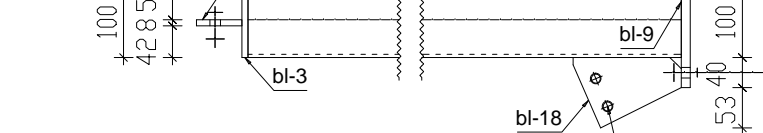
2xbl-4 BL8x100x60 | 1:10



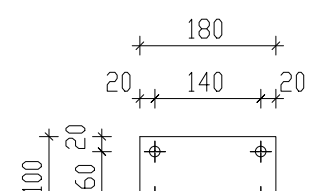
2 x US-5
1:10 St3SX



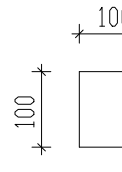
K - K **L - L**



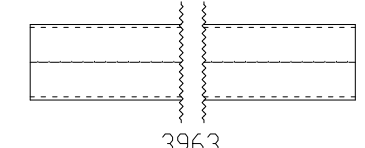
1xbl-9 BL12x180x100 | 1:10



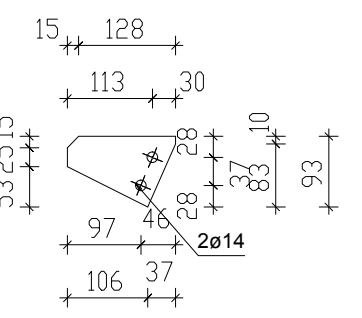
1xbl-3 BL8x100x100 | 1:10



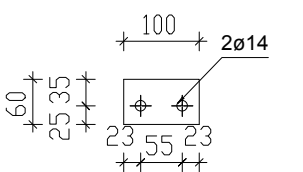
1x us-3 RHS100x4x3963 | 1:10



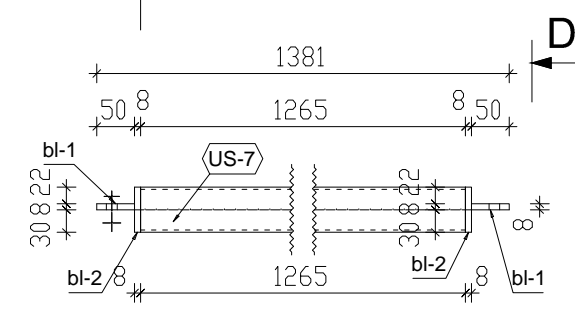
1xbl-18 BL8x143x93 | 1:10



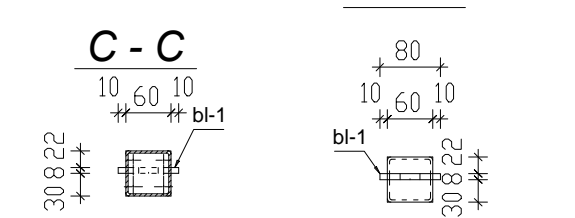
1xbl-4 BL8x100x60 | 1:10



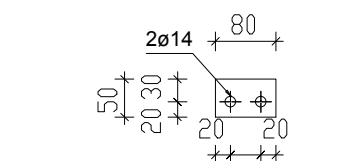
2 x US-7
1:10 St3SX



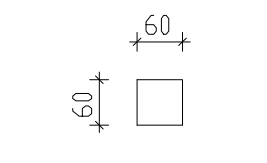
C - C **D - D**



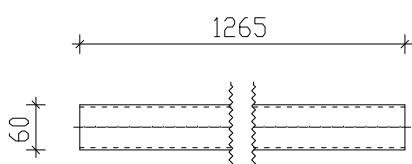
2xbl-1 BL8x80x50 | 1:10



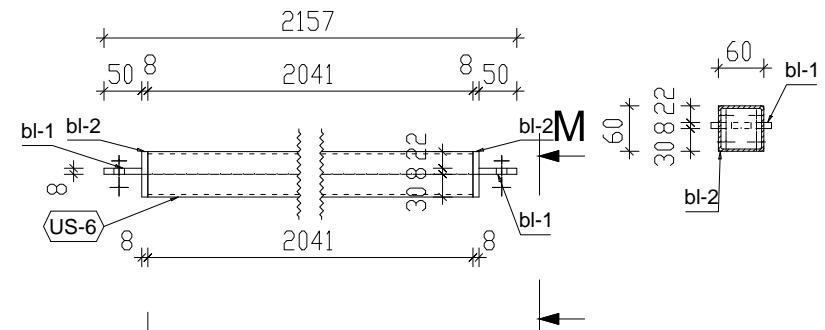
2xbl-2 BL8x60x60 | 1:10



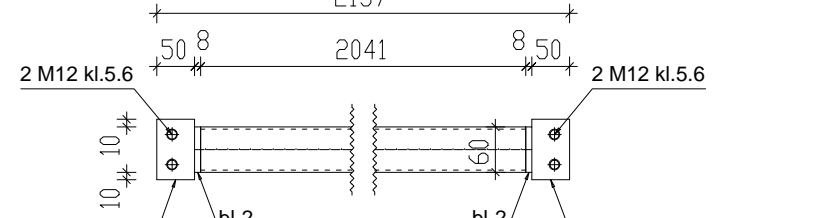
1x us-9 RHS60x3x1265 | 1:10



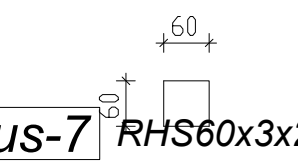
2 x US-6
1:10 St3SX



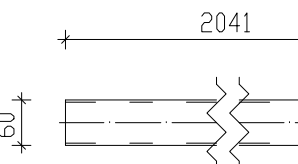
N - N **M - M**



2xbl-2 BL8x60x60 | 1:10



1x us-7 RHS60x3x2041 | 1:10



Legenda:

EP: s-3 — numer pozycji w elemencie wysyłkowym
 EW: S-5 — numer elementu wysyłkowego

Oznaczenie elementów wysyłkowych

ilość i numer elementów wysyłkowych w całej konstrukcji

5xS-5 HEA240x7000
 1:10 St3SX — przekrój, długość elementu, skala, materiał

Oznaczenie pozycji

ilość i numer pozycji w elemencie wysyłkowym

1x s-1 HEA220x7000
 1:10 St3SX — przekrój, długość elementu, skala, materiał

Oznaczenie blach

ilość i numer blach w elemencie wysyłkowym

6xbl-39 400x170x10
 1:10 St3SX — wymiary, grubość, skala, materiał

UWAGI:

- Stal kształtowa St3S/18G2
- Stal blachy St3S/18G2
- Elektrody ER 1.46
- Grubość spoin pachwinowych: min-0.2 elem. grubszego max-0.7 elem. cińszego

Pozycja	Nazwa	Ilość (szt.)	Długość (mm)	Szerokość (mm)	Materiał	Waga 1 szt. (kg)	Waga (kg)	
US-1	x	4						
us-1	RHS100x4	1	3880	0	St3SX	46.17	46.17	
bl-14	BL8x143x93	1	143	93	St3SX	0.56	0.56	
bl-9	BL12x180x100	1	180	100	St3SX	1.7	1.7	
bl-4	BL8x100x60	1	100	60	St3SX	0.38	0.38	
bl-3	BL8x100x100	1	100	100	St3SX	0.63	0.63	
-	HILTI HIT-HY 20 HAS-E M12x110/88	160	0	0	5.8	0.22	0.9	
-	Śruba - M12 x 35	2	35	0	5.6	0.04	0.09	
-	Podkładka - 13	2	0	0	140 HV	0.01	0.01	
-	Nakrętka M12 - 5-2	2	0	0	5.6	0.02	0.03	
Razem:		15					50.46	
							Waga wszystkich (kg):	201.84
US-2	x	2						
us-2	RHS100x4	1	4017	0	St3SX	47.81	47.81	
bl-4	BL8x100x60	2	100	60	St3SX	0.38	0.75	
bl-3	BL8x100x100	2	100	100	St3SX	0.63	1.26	
-	Śruba - M12 x 35	2	35	0	5.6	0.04	0.09	
-	Podkładka - 13	2	0	0	140 HV	0.01	0.01	
-	Nakrętka M12 - 5-2	2	0	0	5.6	0.02	0.03	
Razem:		11					49.95	
							Waga wszystkich (kg):	99.9
US-3	x	2						
us-3	RHS100x4	1	2204	0	St3SX	26.23	26.23	
bl-4	BL8x100x60	2	100	60	St3SX	0.38	0.75	
bl-3	BL8x100x100	2	100	100	St3SX	0.63	1.26	
Razem:		5					28.24	
							Waga wszystkich (kg):	56.48
US-4	x	2						
us-5	RHS100x4	1	1543	0	St3SX	18.36	18.36	
bl-20	BL8x149x87	1	149	87	St3SX	0.38	0.38	
bl-9	BL12x180x100	1	180	100	St3SX	1.7	1.7	
bl-4	BL8x100x60	1	100	60	St3SX	0.38	0.38	
bl-3	BL8x100x100	1	100	100	St3SX	0.63	0.63	
-	HILTI HIT-HY 20 HAS-E M12x110/88	160	0	0	5.8	0.22	0.9	
Razem:		9					22.53	
							Waga wszystkich (kg):	45.06
US-5	x	2						
us-3	RHS100x4	1	3963	0	St3SX	47.16	47.16	
bl-18	BL8x143x93	1	143	93	St3SX	0.56	0.56	
bl-9	BL12x180x100	1	180	100	St3SX	1.7	1.7	
bl-4	BL8x100x60	1	100	60	St3SX	0.38	0.38	
bl-3	BL8x100x100	1	100	100	St3SX	0.63	0.63	
-	HILTI HIT-HY 20 HAS-E M12x110/88	160	0	0	5.8	0.22	0.9	
-	Śruba - M12 x 35	2	35	0	5.6	0.04	0.09	
-	Podkładka - 13	2	0	0	140 HV	0.01	0.01	
-	Nakrętka M12 - 5-2	2	0	0	5.6	0.02	0.03	
Razem:		15					51.45	
							Waga wszystkich (kg):	102.9
US-6	x	2						
us-7	RHS100x3	1	2041	0	St3SX	10.79	10.79	
bl-2	BL8x60x60	2	60	60	St3SX	0.23	0.45	
bl-1	BL8x80x50	2	80	50	St3SX	0.25	0.5	
-	Śruba - M12 x 35	12	35	0	5.6	0.04	0.53	
-	Podkładka - 13	12	0	0	140 HV	0.01	0.08	
-	Nakrętka M12 - 5-2	12	0	0	5.6	0.02	0.2	
Razem:		41					12.55	
							Waga wszystkich (kg):	24.3
US-7	x	2						
us-9	RHS100x3	1	1265	0	St3SX	6.69	6.69	
bl-2	BL8x60x60	2	60	60	St3SX	0.23	0.45	
bl-1	BL8x80x50	2	80	50	St3SX	0.25	0.5	
-	Śruba - M12 x 35	12	35	0	5.6	0.04	0.53	
-	Podkładka - 13	12	0	0	140 HV	0.01	0.08	
-	Nakrętka M12 - 5-2	12	0	0	5.6	0.02	0.2	
Razem:		41					8.45	
							Waga wszystkich (kg):	16.1

"STALBET-projekt" mgr inż. Emil Kubacki 33-300 Nowy Sącz ul. Krzywskiego 27, tel. 60258772 NIP 734-237-45-09 REGON 120345973 e-mail: emil.k@onet.eu	
OBIEKT	GMINNA OCZYSZCZALNIA ŚCIEKÓW
LOKALIZACJA	Zakosiele, gmina Inowódz działki nr 267/1, 266, 369, 457, 607
INWESTOR	Gmina Inowódz ul. Spalska 2; 97-215 Inowódz
TEMAT RYS.	Element warsztatowy US-1 do US-7
PROJEKT WYKONAWCY mgr inż. Stanisław Szewczyk ul. Fabryczna 10 tel. 442-11-33 33-300 Nowy Sącz	OPROJEKTOWAŁ mgr inż. Emil Kubacki 33-300 Nowy Sącz ul. Krzywskiego 27, tel. 60258772 NIP 734-237-45-09 REGON 120345973 e-mail: emil.k@onet.eu
DATA: 2014-12-15	SKALA: 1:10;1:20
NR RYSUNKU:	007